

BRYAN O'SULLIVAN  
COLLECTION

AMANITA



BRYAN O'SULLIVAN  
COLLECTION



W 22 X D 22 X H 47 CM  
W 8.75 X D 8.75 X H 16.75 IN

BRYAN O'SULLIVAN  
COLLECTION



**AMANITA**

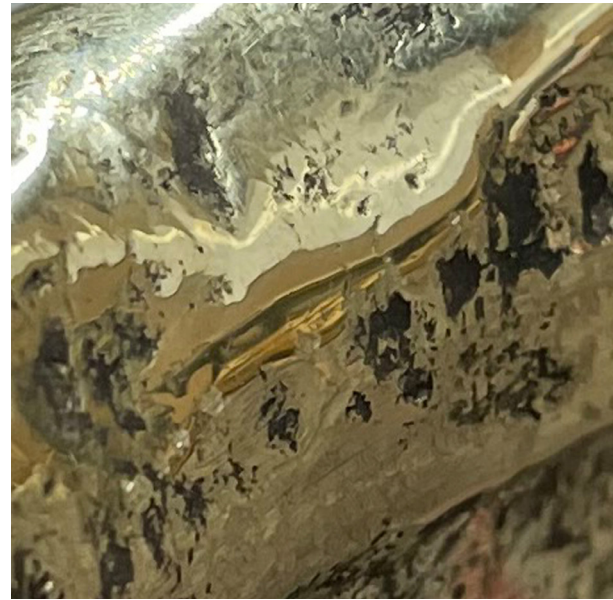
A HAND-BLOWN TWO-TIER TABLE LIGHT MADE IN TRADITIONAL BULLICANTE GLASS, WITH CAST BRASS FINIALS.

BRYAN O'SULLIVAN  
*COLLECTION*



**HAND BLOWN BULLICANTE GLASS**

EVERY GLASS PIECE IS METICULOUSLY HANDMADE, UTILIZING TIME-HONORED METHODS. DUE TO THIS ARTISANAL APPROACH, MINOR DISTINCTIONS CAN BE ANTICIPATED, ADDING TO THE UNIQUENESS OF EACH PIECE, ENSURING IT IS TRULY ONE OF A KIND.



**POLISHED CAST BRASS**



BRYAN O'SULLIVAN  
COLLECTION

