

BRYAN O'SULLIVAN  
COLLECTION

SCHURMANN





BRYAN O'SULLIVAN  
COLLECTION



W 15 X D 15 X H 30 CM  
W 6 X D 6 X H 12 IN



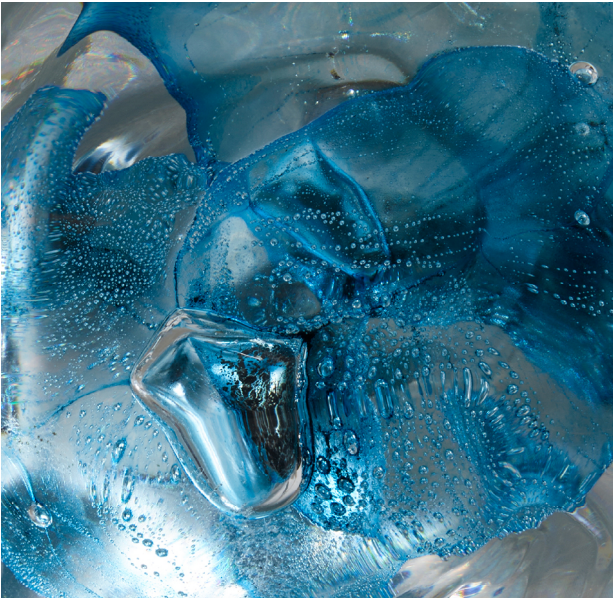
BRYAN O'SULLIVAN  
COLLECTION



**SCHURMANN**

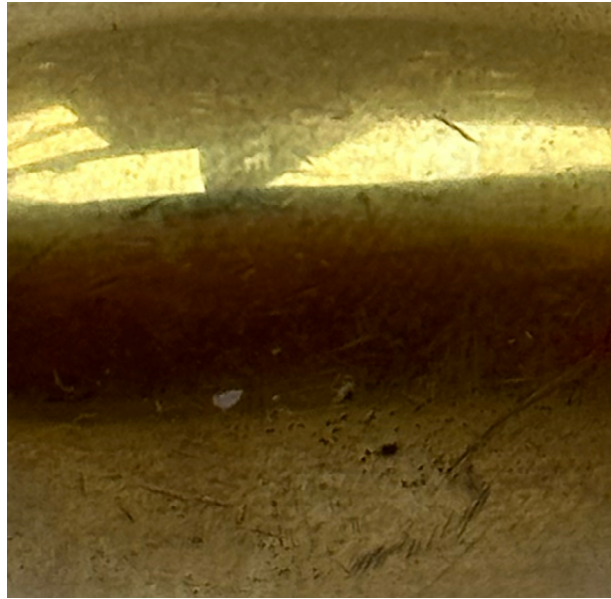
HAND-FORMED GLASS TABLE LIGHTS WITH CAST BRASS  
STEM AND LINEN SHADE.  
EDITION OF 20.

BRYAN O'SULLIVAN  
*COLLECTION*

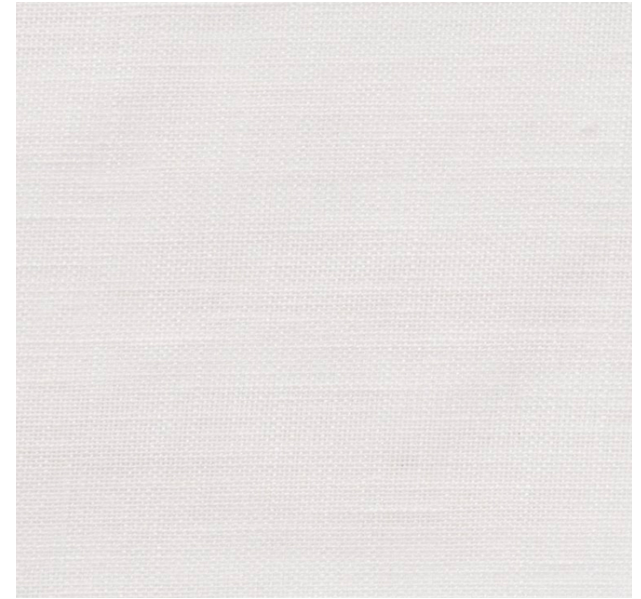


**HAND FORMED GLASS**

EVERY GLASS PIECE IS METICULOUSLY HANDMADE, UTILIZING TIME-HONORED METHODS. DUE TO THIS ARTISANAL APPROACH, MINOR DISTINCTIONS CAN BE ANTICIPATED, ADDING TO THE UNIQUENESS OF EACH PIECE, ENSURING IT IS TRULY ONE OF A KIND.



**CAST BRASS**



**LINEN**